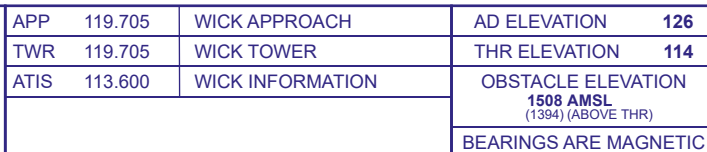
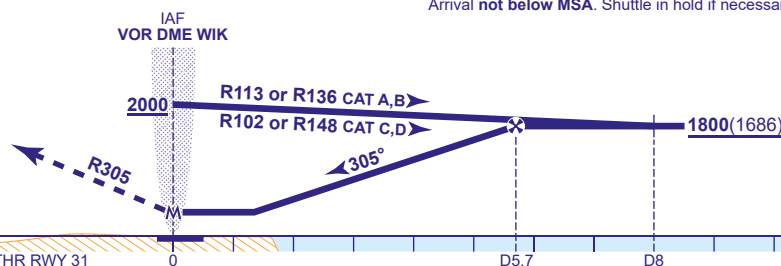


**WICK
VOR/DME
RWY 31**
(ACFT CAT A,B,C,D)

[illegible]

DME WIK	5	4	3	2
ALT(HGT)	1580(1466)	1260(1146)	950(836)	630(516)

Climb straight ahead on **WIK VOR R305** to **2000** then turn right to **VOR WIK** to enter the hold at **2000**, or as directed.



Aircraft Category		A	B	C	D	Rate of descent	G/S KT	160	140	120	100	80
OCA (OCH)	WITH DME	450(336)	460(346)	480(366)	500(386)		FT/MIN	840	740	630	530	420
	NO DME	490(376)	490(376)	490(376)	500(386)							
VM(C)OCA (OCH AAL)	Total Area	630(504)	630(504)	1090(964)	1090(964)							
	North of RWY 13/31	530(404)	620(494)	720(594)	820(694)							

NOTES 1 FAT offset 4° north of the extended RWY C/L.
2 Lowest altitude to commence procedure from hold is **2000**.

AERO INFO DATE 16 OCT 20

AD2-EGPC-8-6